

An aerial view of a modern office workstation. The desk is light-colored wood with a dark grey central divider and blue accents. It is equipped with a laptop, keyboard, mouse, and a blue ergonomic chair. A red hexagonal object is visible on the floor to the left, and a blue hexagonal object is visible in the top left corner. The floor is a light grey concrete.

SUNLINE

***SEATING SERIES***

# ELEVATE CHAIR SERIES

## BENEFITS



Costs a fraction of the price of other high-quality ergonomic chairs



Modern, elegant design



Designed for better back support



Made with premium materials



## CHAIR SPECS

<b>A WEIGHT LIMIT</b>	350 lbs
<b>B HEIGHT ADJUSTMENT</b>	49" - 56"
<b>C SWIVEL</b>	360 Degrees
<b>D HEADREST TILT</b>	45 Degrees
<b>E CUSHION DEPTH</b>	22"
<b>F CUSHION WIDTH</b>	21"

## CHAIR SPECS

<b>Base</b>	Heavy-duty, Aluminum, Casters
<b>Cushions</b>	Adjustable, Memory Foam
<b>Seat</b>	Tension Lock, Tilt Control
<b>Arms</b>	Fully Adjustable, Hard-molded
<b>Back</b>	Adjustable Lumbar Support, Mesh
<b>Headrest</b>	Adjustable, Curved Mesh
<b>Color</b>	Black (Stock), Custom Available
<b>Lift Specifics</b>	Chrome Gaslift

# ELEVATE CHAIR SERIES

## ADJUSTABLE FEATURES

Back design provides comprehensive lumbar and spine support, releasing pressure in all directions.



Fully-adjustable armrests allow for maximum comfort, releasing shoulder and arm stress.



Curved mesh headrest provides adjustable neck support, releasing neck strain.



# ELEVATE CHAIR SERIES

## SWATCHES

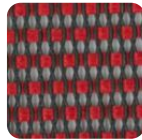
### Backrest Options



ST888-7



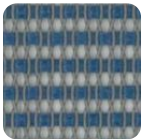
ST888-2



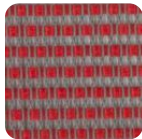
ST888-6H



ST888-9



ST888-5-1



ST888-6



ST888-1



ST888-8

### Cushion Options



MY500-2



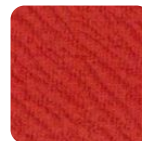
MY500-8



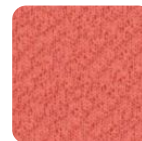
MY500-26



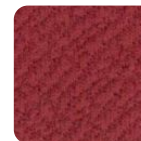
MY500-6



MY500-23



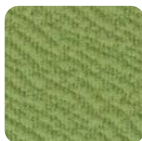
MY500-17



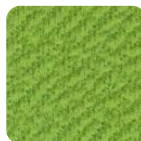
MY500-11



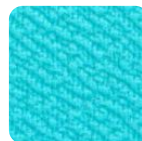
MY500-21



MY500-20



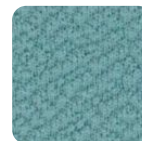
MY500-5



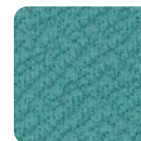
MY500-21



MY500-9



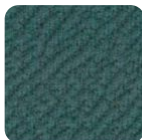
MY500-4



MY500-7



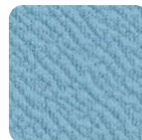
MY500-10



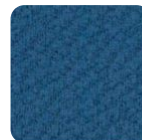
MY500-12



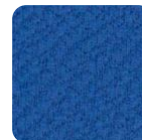
MY500-18



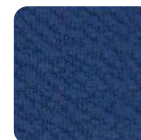
MY500-25



MY500-16



MY500-15



MY500-27



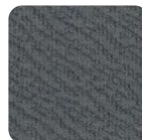
MY500-14



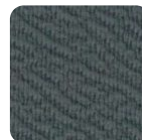
MY500-19



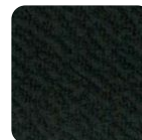
MY500-3



MY500-24



MY500-22



MY500-1

# ERGO PLUS SERIES

## BENEFITS



Costs a fraction of the price of other high-quality ergonomic chairs



Provides all-day comfort and support



Promotes good posture and longterm spine health



## SWATCHES

Backrest Fabric Options



Seat Fabric Options



## CHAIR SPECS

- A WEIGHT LIMIT** 350 lbs
- B DEPTH (FRONT-BACK)** 25"
- C DEPTH (SIDE-SIDE)** 28"
- D HEIGHT ADJUSTMENT** 42"-48"
- E SWIVEL** 360 Degrees

## CHAIR SPECS

- Base** Heavy-duty, Hard-molded, Casters
- Cushions** Adjustable, Memory Foam
- Seat** Tension Lock, Tilt Control
- Arms** Fully Adjustable, Gel
- Back** Lumbar Support, Mesh
- Headrest** Adjustable, Leatherette Composite
- Color** Black (Stock), Custom Available
- Lift Specifics** Pneumatic Lift Cylinder

\*Factory Order options have increased shipping times

# ERGO PLUS SERIES

## ADJUSTABLE FEATURES

HEIGHT ADJUSTABLE



RIGHT/LEFT SWIVEL



FORWARD/BACKWARD MOVEMENT



UP/DOWN FLEXIBLE WAIST



## TILT FEATURE



# ERGO CLASSIC SERIES

## BENEFITS



Costs a fraction of the price of other high-quality ergonomic chairs



Provides all-day comfort and support



Promotes good posture and longterm spine health



## SWATCHES

### Backrest Fabric Options



### Seat Fabric Options



## CHAIR SPECS

- A WEIGHT LIMIT** 350 lbs
- B DEPTH (FRONT-BACK)** 26"
- C DEPTH (SIDE-SIDE)** 28"
- D HEIGHT ADJUSTMENT** 42"-48"
- E SWIVEL** 360 Degrees

## CHAIR SPECS

- Base** Heavy-duty, Hard-molded, Casters
- Cushions** Adjustable, Heavy Foam
- Seat** Tension Lock, Tilt Control
- Arms** Partially Adjustable, Gel
- Back** Lumbar Support, Mesh
- Headrest** None
- Color** Black (Stock), Custom Available
- Lift Specifics** Pneumatic Lift Cylinder

\*Factory Order options have increased shipping times

# ERGO SLED BASE SERIES

## BENEFITS



Affordable



Versatile



Lightweight



Classic Style



## SWATCHES



Black

## CHAIR SPECS

- A WEIGHT LIMIT** 275 lbs
- B DEPTH (FRONT-BACK)** 24"
- C DEPTH (FULL UNIT)** 25.5"
- D WIDTH (SIDE-SIDE)** 19"
- E WIDTH (FULL UNIT)** 19.5"

## CHAIR SPECS

<b>Base</b>	Lightweight, Sled
<b>Cushions</b>	Padded Foam
<b>Seat</b>	Non-adjustable, Hard-molded
<b>Arms</b>	Non-adjustable, Hard-molded
<b>Back</b>	Non-adjustable, Mesh
<b>Headrest</b>	None
<b>Color</b>	Black (Stock)
<b>Lift Specifics</b>	None

\*Factory Order options have increased shipping times

# ERGO NESTING SERIES

## BENEFITS



Affordable



Versatile



Lightweight



Classic Style



## SWATCHES

### Back Mesh

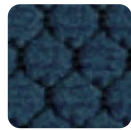


XA - 2901B

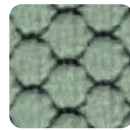
### Cushion Fabric



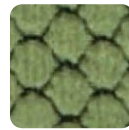
TX - 201



TX - 210



TX - 224



TX - 215



TX - 211



TX - 204

Stock

Factory Order\*

## CHAIR SPECS

- A WEIGHT LIMIT** 275 lbs
- B DEPTH (FRONT-BACK)** 22.5"
- C DEPTH (FULL UNIT)** 25"
- D WIDTH (SIDE-SIDE)** 17"
- E WIDTH (FULL UNIT)** 17.5"

## CHAIR SPECS

- Base** Lightweight, Wheels
- Cushions** Padded Foam
- Seat** Non-adjustable, Hard-molded
- Arms** Non-adjustable, Hard-molded
- Back** Non-adjustable, Mesh
- Headrest** None
- Color** Black (Stock)
- Lift Specifics** None

\*Factory Order options have increased shipping times

# ERGO GUEST SERIES

## BENEFITS



Affordable



Versatile



Lightweight



Classic Style



## SWATCHES



Black

## CHAIR SPECS

- A WEIGHT LIMIT** 275 lbs
- B DEPTH (FRONT-BACK)** 20"
- C DEPTH (SIDE-SIDE)** 20"

## CHAIR SPECS

<b>Base</b>	Lightweight
<b>Cushions</b>	Cushioned Mesh
<b>Seat</b>	Non-adjustable, Hard-molded
<b>Arms</b>	Non-adjustable, Hard-molded
<b>Back</b>	Non-adjustable, Nylon
<b>Headrest</b>	None
<b>Color</b>	Black (Stock), Multiple Fabric Colors
<b>Lift Specifics</b>	None

\*Factory Order options have increased shipping times

# ERGO STACKING SERIES

## BENEFITS



Affordable



Versatile



Lightweight



Classic Style



## SWATCHES



Black



White



Silver



Blue



Yellow



Red

-----  
Factory Order\*

## CHAIR SPECS

- A WEIGHT LIMIT** 275 lbs
- B DEPTH (FRONT-BACK)** 19.5"
- C DEPTH (FULL UNIT)** 20"
- D WIDTH (SIDE-SIDE)** 17"
- E WIDTH (FULL UNIT)** 18.5"

## CHAIR SPECS

<b>Base</b>	Lightweight, Sled
<b>Cushions</b>	Available With or Without Cushion
<b>Seat</b>	Non-adjustable, Hard-molded
<b>Arms</b>	Non-adjustable, Hard-molded
<b>Back</b>	Non-adjustable, Plastic
<b>Headrest</b>	None
<b>Color</b>	Black (Stock), Multiple Fabric Colors
<b>Lift Specifics</b>	None

\*Factory Order options have increased shipping times

# GET IN TOUCH

SUNLINE

## CONTACT

313 W 4th Street  
Bridgeport, PA 19405

**PHONE:**  
610.937.4897



## HOURS

24/7 Sales Availability

### SHOWROOM HOURS

Monday - Friday  
8:30 am - 6:00 pm EST

\*Weekends by appointment

