

SUNLINE SIGNATURE



**PANEL
SYSTEM
& ACCESSORIES**

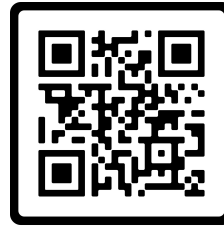
TABLE OF CONTENTS

The world's **easiest** cubicle to assemble, disassemble, and reconfigure when it's time for a change—no special installation skills needed!

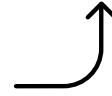
SUNLINE

TABLE OF CONTENTS	2
HEIGHT & FOOTPRINT OPTIONS	3
FABRIC & FINISHES	4
BASE & ACCENT PANELS	6
WORKSURFACE & ACCESSORY FINISHES	7
41" HIGH SIGNATURE SLIDING CUBICLES	8
53" HIGH SIGNATURE SLIDING CUBICLES	10
65" HIGH SIGNATURE SLIDING CUBICLES	12
83" HIGH SIGNATURE SLIDING CUBICLES	13
CALL CENTERS	15
TEAMWORK STATIONS	17
CUBICLE ACCESSORIES	18
PRIVACY DOORS	19
CONTACT US	20

FOOTPRINT & HEIGHT OPTIONS



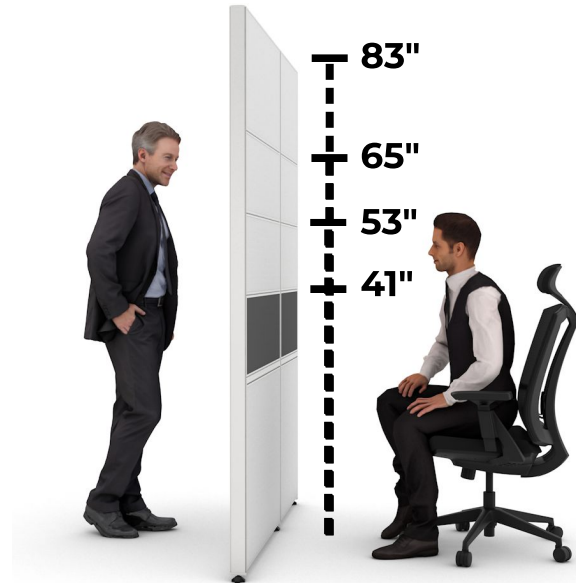
Watch our 2-minute video on how easy the Signature system is to build!



FOOTPRINTS :

- 4'x2' , 4'x3'
- 5'x2' , 5'x3' , 5'x5'
- 6'x5' , 6'x6' , 6'x8'
- 7'x6' , 7'x7'
- 8'x6' , 8'x8' , 8'x10'
- 9'x12'
- 10'x10' , 10'x12'

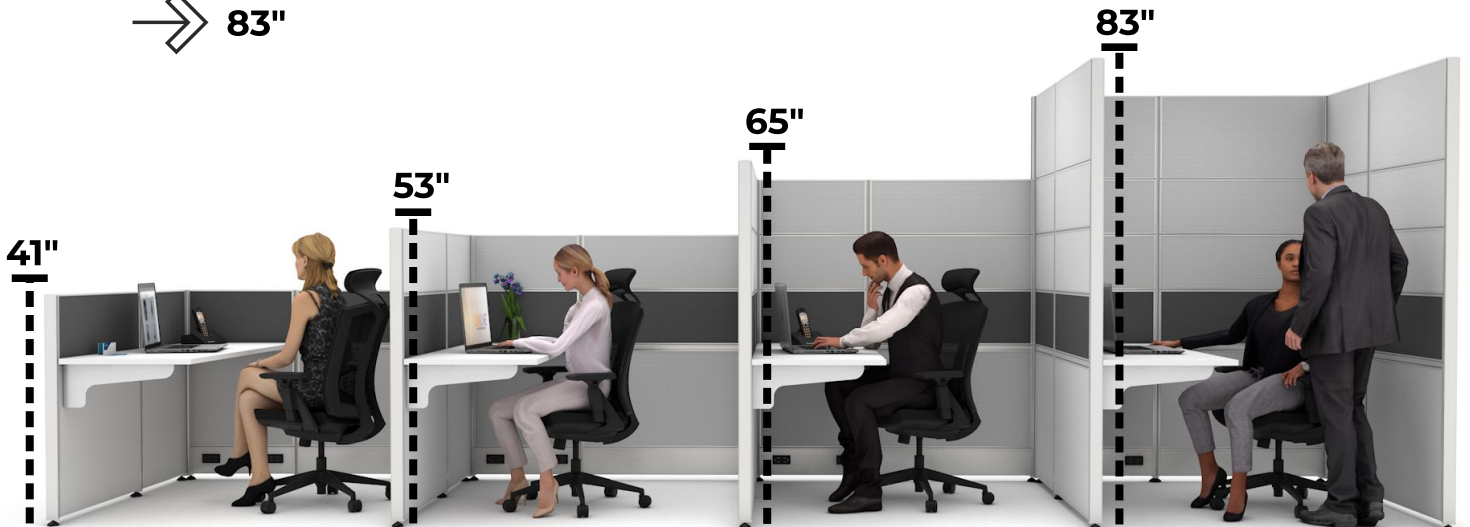
*custom-size footprints available!



average male height: 5'9" (69")
average female height: 5'4" (64")

HEIGHTS :

- 41"
- 53"
- 65"
- 83"



FABRIC & FINISHES



→ Sunline provides a wide range of fabric and finish options, enabling you to design a workspace that is both functional and visually appealing.

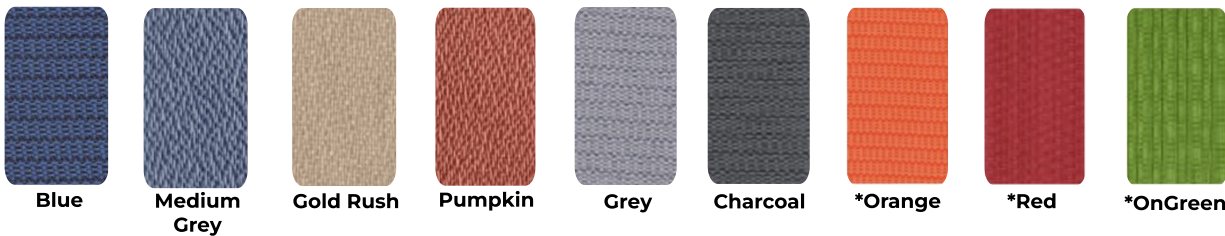
IN-STOCK FABRIC OPTIONS:

*Upcharge and Extended Lead-time for Orange, Red, and OnGreen



Grey Charcoal

BASE OPTIONS

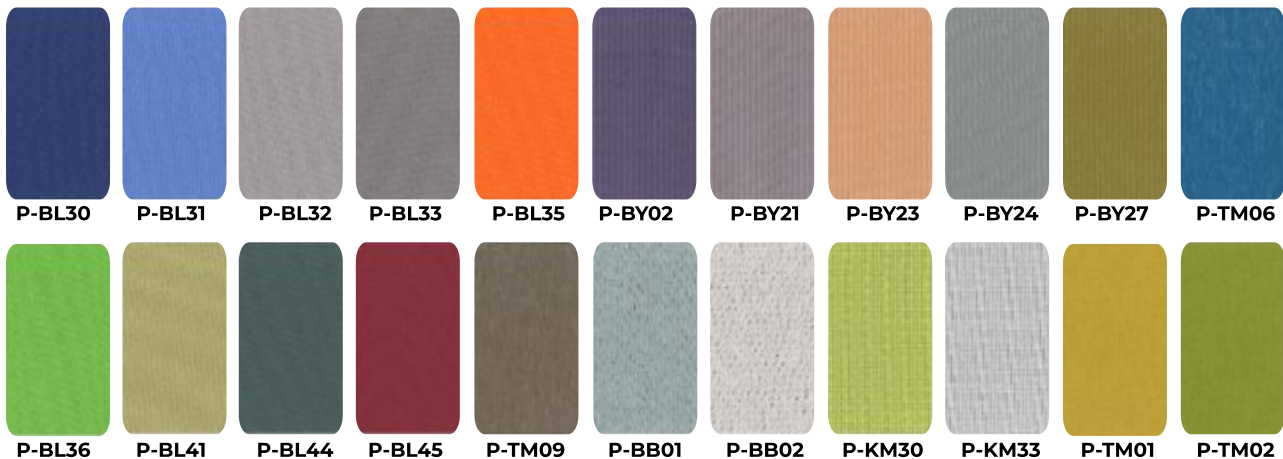


Blue Medium Grey Gold Rush Pumpkin Grey Charcoal *Orange *Red *OnGreen

ACCENT OPTIONS

FACTORY ORDER FABRIC OPTIONS:

*Upcharge for Factory Order Options



P-BL30 P-BL31 P-BL32 P-BL33 P-BL35 P-BY02 P-BY21 P-BY23 P-BY24 P-BY27 P-TM06
P-BL36 P-BL41 P-BL44 P-BL45 P-TM09 P-BB01 P-BB02 P-KM30 P-KM33 P-TM01 P-TM02

IN-STOCK WORKSURFACE OPTIONS:



FACTORY ORDER UNIVERSAL WORKSURFACE OPTIONS:



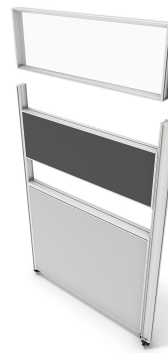
FACTORY ORDER PREMIUM LAMINATE OPTIONS:



FACTORY ORDER PREMIUM VENEER OPTIONS:

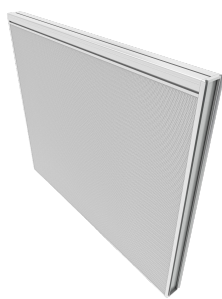


BASE & ACCENT PANELS

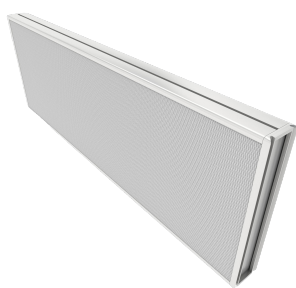


→ Glass and fabric wall panels slide effortlessly in and out of place, allowing you to set up your workspace in less than half the time of traditional cubicles.

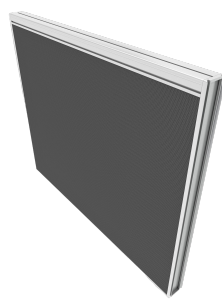
IN-STOCK FABRIC OPTIONS: *Upcharge and Extended Lead-time for Orange, Red, and OnGreen



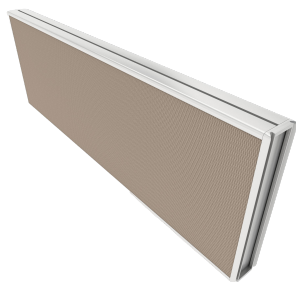
Grey
Base / Accent



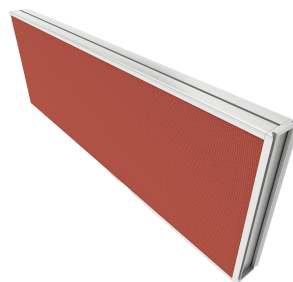
Charcoal
Base / Accent



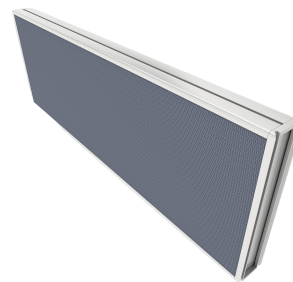
BY25 - Blue
Accent



Gold Rush
Accent



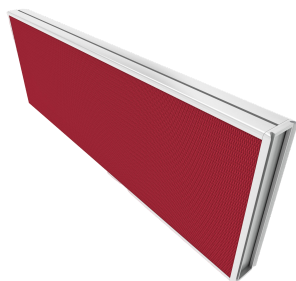
Pumpkin
Accent



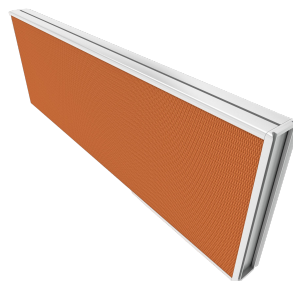
Medium Grey
Accent



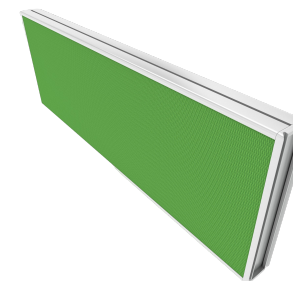
Glass
Accent



Red
Accent



Orange
Accent



OnGreen
Accent

WORKSURFACE & ACCESSORY FINISHES



➔ Discover a range of vibrant colors, various sizes, and versatile configurations, all complemented by convenient cubicle accessories designed to elevate your workspace.

IN-STOCK FINISH OPTIONS:



Grey Fog



White



Walnut



Storm Grey



41" SIGNATURE CUBICLES



SUNLINE



Low wall cubicles encourage teamwork and connection
Ideal for creative workspaces, such as those for design teams

4' x 2'
SKU : 900



5' x 2'
SKU : 920



5 x 5'
SKU : 1000



6 x 6'
SKU : 1030



6 x 8'
SKU : 1060



8 x 8'
SKU : 1090



*custom-size footprints available!

41" POPULAR SIGNATURE CUBICLES LAYOUTS



SUNLINE

Footprint: 5'x2' →
Layout: Cluster of 6
Base Color: Grey
Accent Color: Pumpkin
Lower Storage: Box-Box-File



← Footprint: 5'x5'
Layout: Cluster of 6
Base Color: Grey
Accent Color: Blue
Lower Storage: Box-Box-File

Footprint: 6'x6' →
Layout: Run of 3
Base Color: Charcoal
Accent Color: Charcoal
Lower Storage: Box-Box-File



← Footprint: 8'x8'
Layout: Cluster of 6
Base Color: Grey
Accent Color: Grey
Lower Storage (R): Box-Box-File
Lower Storage (L): File-File

*custom-size footprints available!

53" SIGNATURE CUBICLES



SUNLINE



Most popular height option

Perfect for fostering collaboration while providing workers a sense of personal space

4' x 2'
SKU : 910



5' x 2'
SKU : 930



5' x 5'
SKU : 1010



6' x 6'
SKU : 1040



6' x 8'
SKU : 1070



8' x 8'
SKU : 1100



*custom-size footprints available!

53" POPULAR SIGNATURE CUBICLES LAYOUTS



SUNLINE



← **Footprint:** 5'x3'
Layout: Cluster of 6
Base Color: Charcoal
Accent Color: Charcoal



→ **Footprint:** 6'x6'
Layout: Run of 3
Base Color: Grey
Accent Color: Blue
Lower Storage (R): Box-Box-File
Lower Storage (L): File-File



← **Footprint:** 6'x6'
Layout: Pack of 8
Base Color: Charcoal
Accent Color(s): Orange, Charcoal
Finish Color: Fog Grey
Lower Storage (R): Box-Box-File
Lower Storage (L): File-File
Accessories: Sit-Stand Desk, Double Dry Erase Board



→ **Footprint:** 8'x8'
Layout: Cluster of 6
Base Color: Grey
Accent Color: Grey
Lower Storage (R): Box-Box-File
Lower Storage (L): File-File

*custom-size footprints available!

65" SIGNATURE CUBICLES



SUNLINE



65" cubicles offer the most acoustical and visual privacy

Ideal for work that requires quiet and focus without the interference of distractions (sliding door option available)

4' x 2'

SKU : 940



5' x 2'

SKU : 970



5 x 5'

SKU : 1020



6 x 6'

SKU : 1050



6 x 8'

SKU : 1080



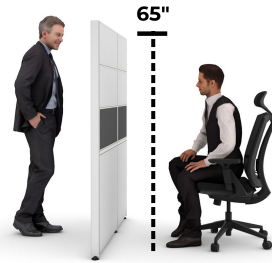
8 x 8'

SKU : 1110



*custom-size footprints available!

65" POPULAR SIGNATURE CUBICLES LAYOUTS



SUNLINE



- ← **Footprint:** 5'x5'
- Layout:** Cluster of 6
- Base Color:** Grey
- Accent Color:** Medium Grey
- Finish:** Storm Grey
- Lower Storage:** Box-Box-File



- **Footprint:** 6'x6'
- Layout:** Cluster of 6
- Base Color:** Charcoal
- Accent Color:** Charcoal
- Lower Storage:** Box-Box-File
- Upper Storage:** Overhead Cabinet
- Accessory:** Dual Monitor Arms



- ← **Footprint:** 8'x8'
- Layout:** Run of 3
- Base Color:** Grey
- Accent Color:** Grey
- Finish:** Walnut
- Lower Storage:** Box-Box-File
- Upper Storage:** Overhead Cabinet
- Accessory:** Dual Monitor Arms



- **Footprint:** 8'x6'
- Layout:** Run of 3
- Base Color:** Grey
- Accent Color:** Blue
- Accessory:** Frosted Sliding Door

*custom-size footprints available!

83" SIGNATURE CUBICLES



SUNLINE



- Ideal private and enclosed space for personal offices
- Two distinct desk setup styles: L-shaped and U-shaped
- Swinging door option available (shown below)



8' x 8'
SKU : 1120

- Base Color:** Grey
- Accent Color:** Charcoal
- Lower Storage:** File-File
- Desk Option:** L-Shape
- Accessory:** Dual Monitor Arms
- Door Option:** Swinging



9' x 12'
SKU : 1470

- Base Color:** Grey
- Accent Color:** Grey
- Lower Storage (L):** File-File
- Lower Storage (R):** Box-Box-File
- Upper Storage:** Overhead Storage Cabinet
- Desk Option:** U-Shape
- Accessory:** Dual Monitor Arms
- Door Option:** Swinging

*custom-size footprints available!

SIGNATURE CALL CENTERS

➔ Designed to optimize floor space, call centers allows for the setup of multiple workstations in a compact area without feeling overcrowded

41"

4' x 2'
SKU : 900



5' x 2'
SKU : 920



53"

4' x 2'
SKU : 910



5' x 2'
SKU : 930



65"

4' x 2'
SKU : 940



5' x 2'
SKU : 970



POPULAR SIGNATURE CALL CENTER LAYOUTS



← **Footprint:** 5'x3'
Height: 41"
Layout: Cluster of 6
Base Color: Grey
Accent Color: Charcoal
Lower Storage: Box-Box-File

Footprint: 4'x2'
Height: 53"
Layout: Run of 3
Base Color: Grey
Accent Color: Blue



← **Footprint:** 5'x3'
Layout: Run of 3
Base Color: Charcoal
Accent Color: Charcoal
Lower Storage: Box-Box-File



Footprint: 4'x2'
Height: 53"
Layout: Cluster of 6
Base Color: Grey
Accent Color: Gold Rush



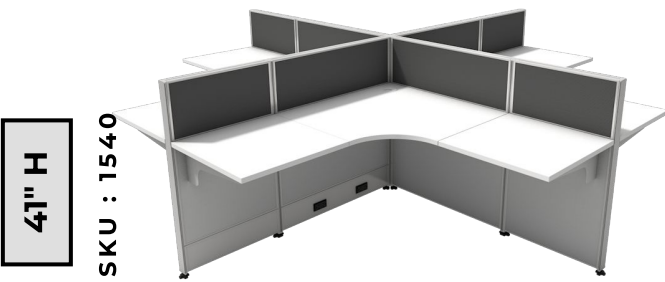
TEAMWORK STATIONS

→ Our Teamwork Stations are designed for teams of 3, 4, 6, or more—with shared panels maximizing efficiency, this setup saves both space and money!

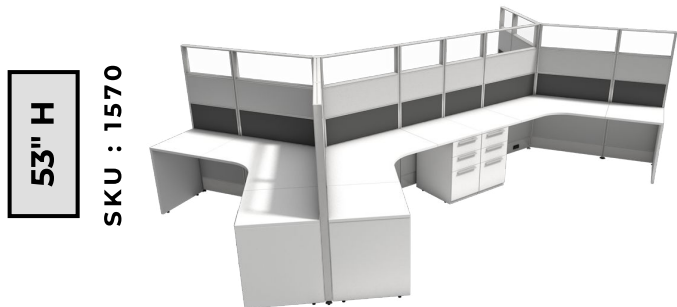
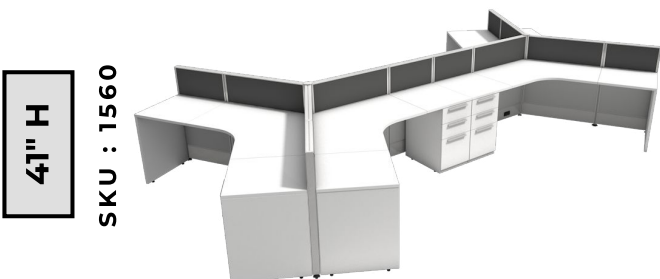
3-PERSON STYLE



4-PERSON STYLE



6-PERSON STYLE



CUBICLE ACCESSORIES



Cubicle organization accessories help keep your workspace tidy and free from unnecessary clutter.



Sit-Stand Base



Box-Box-File



File-File



Mobile Box-File



2-Drawer Lateral File



Double Magnetic Dry Erase Whiteboard



Magnetic Dry Erase Whiteboard



Monitor Arms



Hanging Shelf



Overhead Task Light



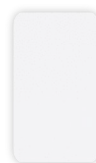
Overhead Storage Cabinet



Wardrobe Cabinet



Storage Tower



White



Walnut



Grey Fog



Storm Grey

* most accessories available in the above finishes.

PRIVACY DOORS

➔ Adding doors to your cubicle significantly enhances the privacy and functionality of your workspace, creating a quieter, more focused environment.

Frosted Sliding Door

SKU : 500



➔ **Sliding Door:** available for any 65"H workstation; door handle can be configured for either left-hand or right-hand use.

Clear Swinging Door

SKU : 505



➔ **Swinging Door:** available for any 82.5"H workstation; door handle can be configured for either left-hand or right-hand use; door includes a lock and key.

GET IN TOUCH

CONTACT

313 W 4th Street
Bridgeport, PA 19405

PHONE:
610.272.2050



HOURS

24/7 Sales Availability

SHOWROOM HOURS

Monday - Friday
8:30 am - 6:00 pm EST

*Weekends by appointment



Download for
easy step-by-step
instructions for our
Signature T-post
installation!

SCAN FOR **BILT** 3D INSTRUCTIONS



POWERED BY **BILT** INTELLIGENT INSTRUCTIONS®

Download for
easy step-by-step
instructions for our
Signature X-post
installation!

SCAN FOR **BILT** 3D INSTRUCTIONS



POWERED BY **BILT** INTELLIGENT INSTRUCTIONS®

Download for
easy step-by-step
instructions for our
swinging door
installation!

SCAN FOR **BILT** 3D INSTRUCTIONS



POWERED BY **BILT** INTELLIGENT INSTRUCTIONS®

SUNLINE

Inspire Growth.

