

SUNLINE SELECT



PANEL SYSTEM & ACCESSORIES

TABLE OF CONTENTS

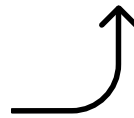
TABLE OF CONTENTS	2
HEIGHT & FOOTPRINT OPTIONS	3
FABRIC & FINISH OPTIONS	4
53" HIGH SELECT SLIDING CUBICLES	7
65" HIGH SELECT SLIDING CUBICLES	9
CALL CENTERS	11
ACCESSORIES	13
CONTACT US	14

SCAN FOR **BILT**. 3D INSTRUCTIONS



POWERED BY **BILT** INTELLIGENT INSTRUCTIONS®

Watch our video on
how easy the Select
system is to build!



FOOTPRINT & HEIGHT OPTIONS

FOOTPRINTS:

- 4'x2' , 4'x3'
- 5'x2' , 5'x3' , 5'x5'
- 6'x5' , 6'x6' , 6'x8'
- 8'x6' , 8'x8'

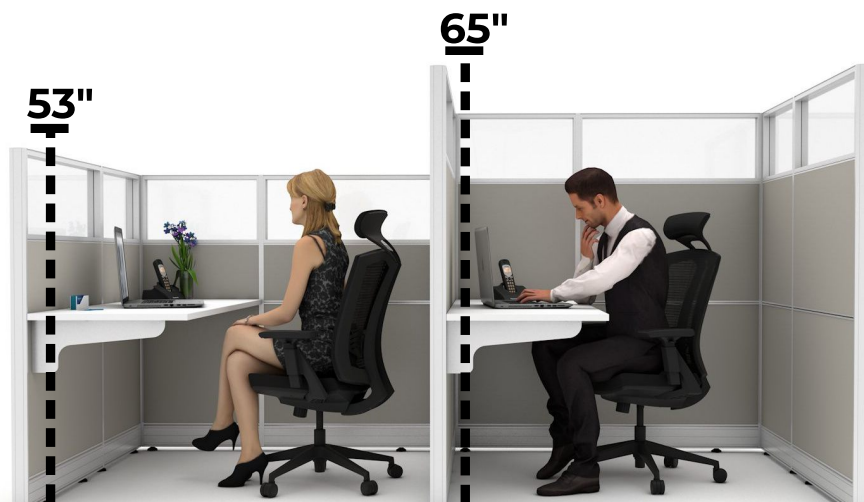
*custom-size footprints available!



STANDARD HEIGHTS:

- 53"
- 65"

average male height: 5'9"
average female height: 5'4"



FABRIC & FINISH OPTIONS

IN-STOCK FABRIC & TRIM OPTIONS:



Greige



Anodized



FABRIC
OPTION



TRIM
OPTION

IN-STOCK WORKSURFACE OPTIONS:



White



Walnut



Grey Fog



Storm Grey

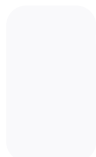
FACTORY ORDER TRIM OPTIONS: *Upcharge for Factory Order Options



F3



F1



UTOR-13

FACTORY ORDER WORKSURFACE OPTIONS: *Upcharge for Factory Order Options



Grey



Black



Teak



Walnut



Maple



Fir



Red Oak



White
Oak



Engineered
Oak



Black
Oak



Red
Walnut



Buller
Thorn Plum



Oak



N. American
Walnut

FABRIC & FINISH OPTIONS

FACTORY ORDER FABRIC OPTIONS:

*Upcharge for Factory Order Options

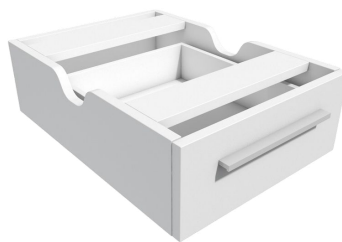


WORKSURFACE & **ACCESSORY** FINISHES



➔ Discover a range of vibrant colors, various sizes, and versatile configurations, all complemented by convenient cubicle accessories designed to elevate your workspace.

IN-STOCK FINISH OPTIONS:



53" SELECT CUBICLES



SUNLINE

- ➔ Most popular height option
- ➔ Perfect for fostering collaboration while providing workers a sense of personal space

4' x 2'
SKU : 140



5' x 2'
SKU : 160



5 x 5'
SKU : 1990



6 x 6'
SKU : 2000



6 x 8'
SKU : 2060



8 x 8'
SKU : 2040



53" POPULAR SELECT CUBICLES LAYOUTS



SUNLINE

Footprint: 4'x3' →
Layout: Run of 3
Finish: White



← Footprint: 4'x2'
Layout: Cluster of 6
Finish: White



Footprint: 6'x6' →
Layout: Cluster of 6
Lower Storage: File-File
Finish: Walnut



← Footprint: 5'x5'
Layout: Run of 3
Lower Storage: Box-Box-File
Finish: Fog Grey



65" SELECT CUBICLES



SUNLINE

- ➔ 65" cubicles offer the most acoustical and visual privacy
- ➔ Ideal for work that requires quiet and focus without the interference of distractions

4' x 2'

SKU : 170



5' x 2'

SKU : 1250



5 x 5'

SKU : 1200



6 x 6'

SKU : 1210



6 x 8'

SKU : 1320



8 x 8'

SKU : 1230



*custom-size footprints available

65" POPULAR SELECT CUBICLES LAYOUTS



SUNLINE



- ← **Footprint:** 6'x8'
- Layout:** Run of 3
- Lower Storage:** File-File
- Upper Storage:** Overhead Storage Cabinet
- Finish:** Storm Grey

- **Footprint:** 6'x6'
- Layout:** Cluster of 6
- Lower Storage:** Box-Box-File



- ← **Footprint:** 5'x5'
- Layout:** Run of 3
- Desk Type:** Standing Desk Base
- Upper Storage:** Hanging Shelf
- Finish:** Fog Grey

- **Footprint:** 6'x6'
- Layout:** Cluster of 6
- Lower Storage:** Box-Box-File
- Upper Storage:** Overhead Storage Cabinet
- Finish:** Walnut



SELECT CALL CENTERS

→ 4'x2' and 5'x2' are ideal call center size options

53"

4' x 2'

SKU : 910



5' x 2'

SKU : 930



65"

4' x 2'

SKU : 940



5' x 2'

SKU : 970



POPULAR SELECT CALL CENTER LAYOUTS



← **Footprint:** 5'x2'
Height: 53"
Layout: Run of 3
Lower Storage: Box-Box-File
Finish: White



Footprint: 5'x2'
Height: 65"
→ **Layout:** Cluster of 6
Lower Storage: File-File
Finish: Storm Grey



← **Footprint:** 5'x3'
Height: 53"
Layout: Cluster of 6
Finish: White

Footprint: 5'x3' →
Height: 65"
Layout: Run of 3
Lower Storage: Box-Box-File
Finish: White



CUBICLE ACCESSORIES



Box-Box-File



File-File



Mobile Box-File



2-Drawer Lateral
File



Overhead
Storage Cabinet



Hanging Shelf



Wardrobe Cabinet



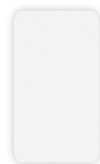
Storage Tower



Sit-Stand Base



Monitor Arms



White



Walnut



Grey Fog



Storm Grey

* accessories available in the above finishes.

GET IN TOUCH

CONTACT

313 W 4th Street
Bridgeport, PA 19405

PHONE:
610.272.2050



HOURS

24/7 Sales Availability

SHOWROOM HOURS

Monday - Friday
8:30 am - 6:00 pm EST

*Weekends by appointment



SCAN FOR **BILT**. 3D INSTRUCTIONS



POWERED BY **BILT** INTELLIGENT INSTRUCTIONS®

Watch our video on
how easy the Select
system is to build!

