

# SUNLINE SIGNATURE



**PANEL  
SYSTEM  
& ACCESSORIES**

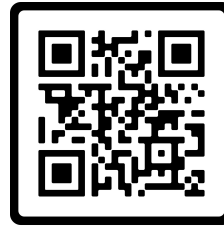
# TABLE OF CONTENTS

The world's **easiest** cubicle to assemble, disassemble, and reconfigure when it's time for a change—no special installation skills needed!

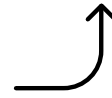
SUNLINE

TABLE OF CONTENTS	2
HEIGHT & FOOTPRINT OPTIONS	3
FABRIC & FINISHES	4
BASE & ACCENT PANELS	6
WORKSURFACE & ACCESSORY FINISHES	7
41" HIGH SIGNATURE SLIDING CUBICLES	8
53" HIGH SIGNATURE SLIDING CUBICLES	10
65" HIGH SIGNATURE SLIDING CUBICLES	12
83" HIGH SIGNATURE SLIDING CUBICLES	13
CALL CENTERS	15
TEAMWORK STATIONS	17
CUBICLE ACCESSORIES	18
PRIVACY DOORS	19
CONTACT US	20

# FOOTPRINT & HEIGHT OPTIONS



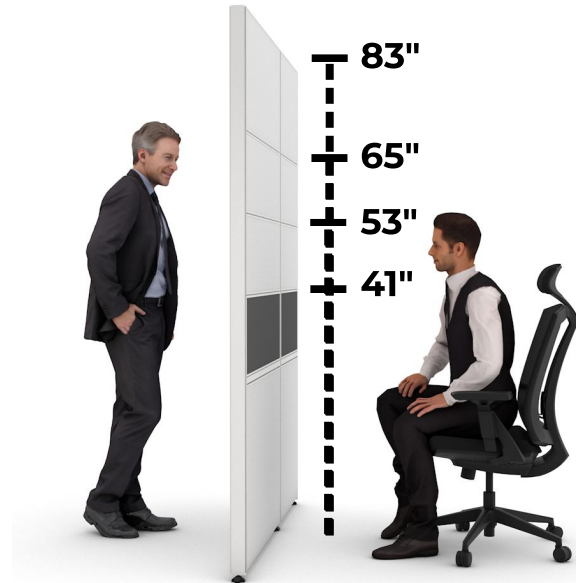
Watch our 2-minute video on how easy the Signature system is to build!



## FOOTPRINTS :

- 4'x2' , 4'x3'
- 5'x2' , 5'x3' , 5'x5'
- 6'x5' , 6'x6' , 6'x8'
- 7'x6' , 7'x7'
- 8'x6' , 8'x8' , 8'x10'
- 9'x12'
- 10'x10' , 10'x12'

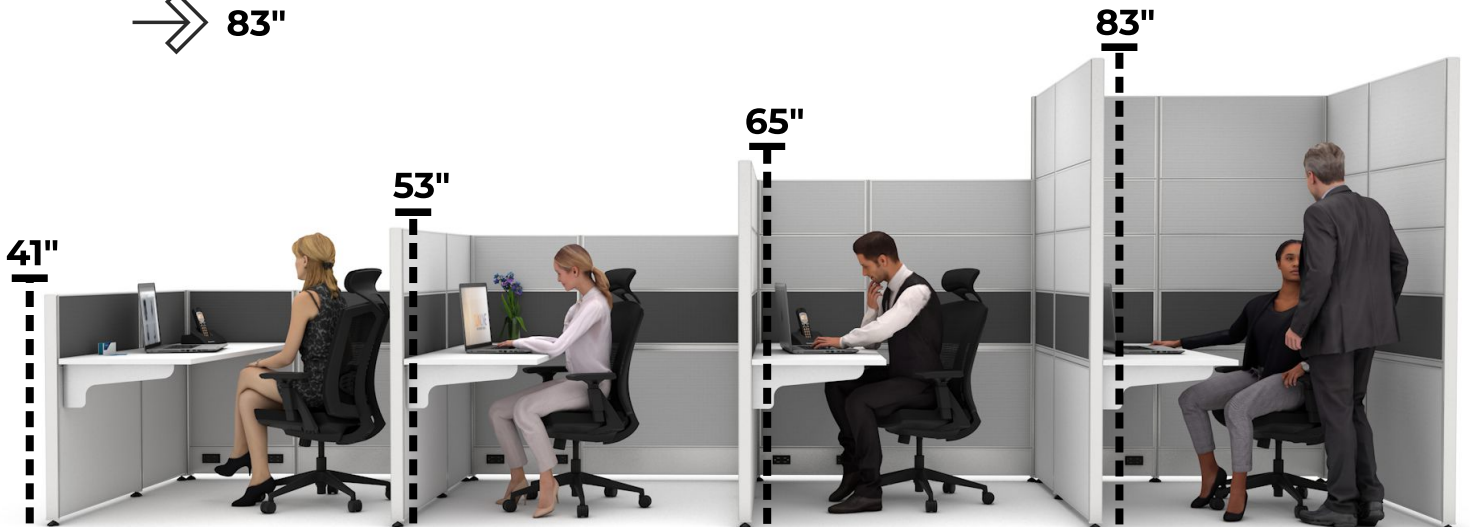
\*custom-size footprints available!



average male height: 5'9" (69")  
average female height: 5'4" (64")

## HEIGHTS :

- 41"
- 53"
- 65"
- 83"



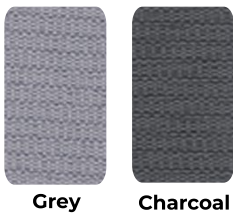
# FABRIC & FINISHES



→ Sunline provides a wide range of fabric and finish options, enabling you to design a workspace that is both functional and visually appealing.

## IN-STOCK FABRIC OPTIONS:

\*Upcharge and Extended Lead-time for Orange, Red, and OnGreen



Grey Charcoal

BASE OPTIONS



Blue Medium Grey Gold Rush Pumpkin Grey Charcoal \*Orange \*Red \*OnGreen

ACCENT OPTIONS

## FACTORY ORDER FABRIC OPTIONS:

\*Upcharge for Factory Order Options



P-BL30 P-BL31 P-BL32 P-BL33 P-BL35 P-BY02 P-BY21 P-BY23 P-BY24 P-BY27 P-TM06



P-BL36 P-BL41 P-BL44 P-BL45 P-TM09 P-BB01 P-BB02 P-KM30 P-KM33 P-TM01 P-TM02



**IN-STOCK WORKSURFACE OPTIONS:**



**FACTORY ORDER UNIVERSAL WORKSURFACE OPTIONS:**



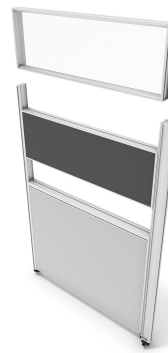
**FACTORY ORDER PREMIUM LAMINATE OPTIONS:**



**FACTORY ORDER PREMIUM VENEER OPTIONS:**

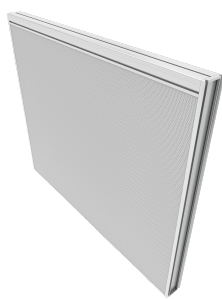


# BASE & ACCENT PANELS

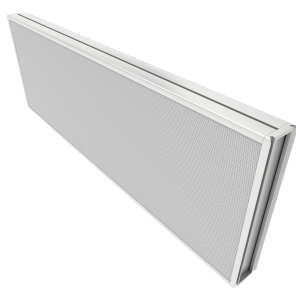


→ Glass and fabric wall panels slide effortlessly in and out of place, allowing you to set up your workspace in less than half the time of traditional cubicles.

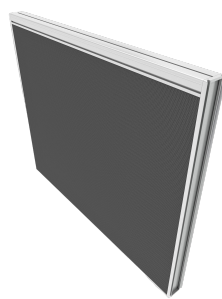
## IN-STOCK FABRIC OPTIONS: \*Upcharge and Extended Lead-time for Orange, Red, and OnGreen



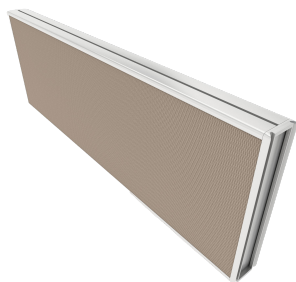
Grey  
Base / Accent



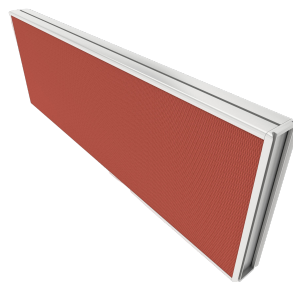
Charcoal  
Base / Accent



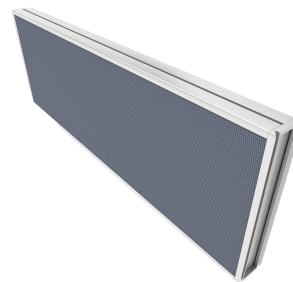
BY25 - Blue  
Accent



Gold Rush  
Accent



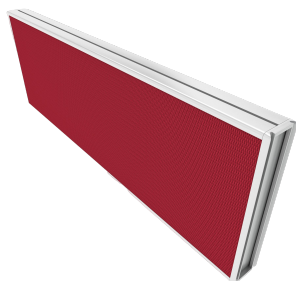
Pumpkin  
Accent



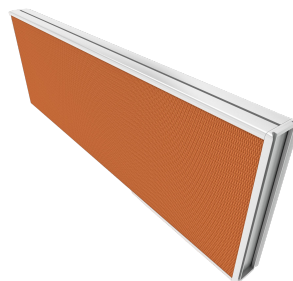
Medium Grey  
Accent



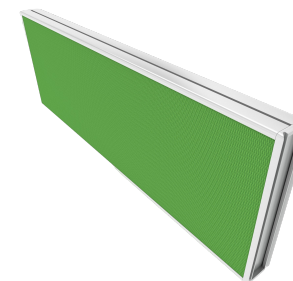
Glass  
Accent



Red  
Accent



Orange  
Accent



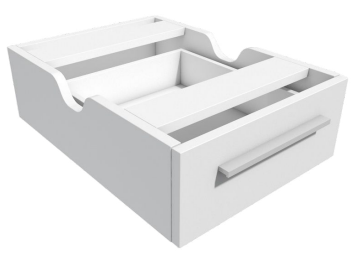
OnGreen  
Accent

# WORKSURFACE & ACCESSORY FINISHES



➔ Discover a range of vibrant colors, various sizes, and versatile configurations, all complemented by convenient cubicle accessories designed to elevate your workspace.

## IN-STOCK FINISH OPTIONS:



# 41" SIGNATURE CUBICLES



SUNLINE



Low wall cubicles encourage teamwork and connection

Ideal for creative workspaces, such as those for design teams

4' x 2'  
SKU : 900



5' x 2'  
SKU : 920



5 x 5'  
SKU : 1000



6 x 6'  
SKU : 1030



6 x 8'  
SKU : 1060



8 x 8'  
SKU : 1090



\*custom-size footprints available!



# 41" POPULAR SIGNATURE CUBICLES LAYOUTS



Footprint: 5'x2' →  
 Layout: Cluster of 6  
 Base Color: Grey  
 Accent Color: Pumpkin  
 Lower Storage: Box-Box-File



← Footprint: 5'x5'  
 Layout: Cluster of 6  
 Base Color: Grey  
 Accent Color: Blue  
 Lower Storage: Box-Box-File

Footprint: 6'x6' →  
 Layout: Run of 3  
 Base Color: Charcoal  
 Accent Color: Charcoal  
 Lower Storage: Box-Box-File



← Footprint: 8'x8'  
 Layout: Cluster of 6  
 Base Color: Grey  
 Accent Color: Grey  
 Lower Storage (R): Box-Box-File  
 Lower Storage (L): File-File

# 53" SIGNATURE CUBICLES



SUNLINE



Most popular height option

Perfect for fostering collaboration while providing workers a sense of personal space

4' x 2'

SKU : 910



5' x 2'

SKU : 930



5 x 5'

SKU : 1010



6 x 6'

SKU : 1040



6 x 8'

SKU : 1070



8 x 8'

SKU : 1100



\*custom-size footprints available!

# 53" POPULAR SIGNATURE CUBICLES LAYOUTS



SUNLINE



← **Footprint:** 5'x3'  
**Layout:** Cluster of 6  
**Base Color:** Charcoal  
**Accent Color:** Charcoal



→ **Footprint:** 6'x6'  
**Layout:** Run of 3  
**Base Color:** Grey  
**Accent Color:** Blue  
**Lower Storage (R):** Box-Box-File  
**Lower Storage (L):** File-File



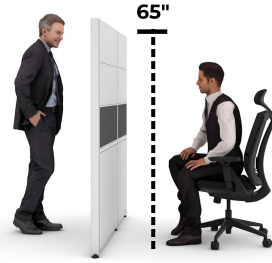
← **Footprint:** 6'x6'  
**Layout:** Pack of 8  
**Base Color:** Charcoal  
**Accent Color(s):** Orange, Charcoal  
**Finish Color:** Fog Grey  
**Lower Storage (R):** Box-Box-File  
**Lower Storage (L):** File-File  
**Accessories:** Sit-Stand Desk, Double Dry Erase Board



→ **Footprint:** 8'x8'  
**Layout:** Cluster of 6  
**Base Color:** Grey  
**Accent Color:** Grey  
**Lower Storage (R):** Box-Box-File  
**Lower Storage (L):** File-File

\*custom-size footprints available!

# 65" SIGNATURE CUBICLES



SUNLINE



65" cubicles offer the most acoustical and visual privacy

Ideal for work that requires quiet and focus without the interference of distractions (sliding door option available)

4' x 2'

SKU : 940



5' x 2'

SKU : 970



5 x 5'

SKU : 1020



6 x 6'

SKU : 1050



6 x 8'

SKU : 1080



8 x 8'

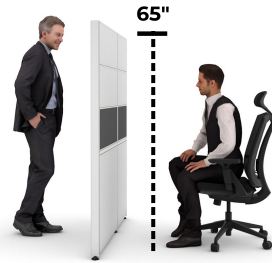
SKU : 1110



\*custom-size footprints available!



# 65" POPULAR SIGNATURE CUBICLES LAYOUTS



SUNLINE



- ← **Footprint:** 5'x5'
- Layout:** Cluster of 6
- Base Color:** Grey
- Accent Color:** Medium Grey
- Finish:** Storm Grey
- Lower Storage:** Box-Box-File



- **Footprint:** 6'x6'
- Layout:** Cluster of 6
- Base Color:** Charcoal
- Accent Color:** Charcoal
- Lower Storage:** Box-Box-File
- Upper Storage:** Overhead Cabinet
- Accessory:** Dual Monitor Arms



- ← **Footprint:** 8'x8'
- Layout:** Run of 3
- Base Color:** Grey
- Accent Color:** Grey
- Finish:** Walnut
- Lower Storage:** Box-Box-File
- Upper Storage:** Overhead Cabinet
- Accessory:** Dual Monitor Arms



- **Footprint:** 8'x6'
- Layout:** Run of 3
- Base Color:** Grey
- Accent Color:** Blue
- Accessory:** Frosted Sliding Door

\*custom-size footprints available!

# 83" SIGNATURE CUBICLES



SUNLINE



- Ideal private and enclosed space for personal offices
- Two distinct desk setup styles: L-shaped and U-shaped
- Swinging door option available (shown below)



**8' x 8'**  
SKU : 1120

- Base Color:** Grey
- Accent Color:** Charcoal
- Lower Storage:** File-File
- Desk Option:** L-Shape
- Accessory:** Dual Monitor Arms
- Door Option:** Swinging



**9' x 12'**  
SKU : 1470

- Base Color:** Grey
- Accent Color:** Grey
- Lower Storage (L):** File-File
- Lower Storage (R):** Box-Box-File
- Upper Storage:** Overhead Storage Cabinet
- Desk Option:** U-Shape
- Accessory:** Dual Monitor Arms
- Door Option:** Swinging

\*custom-size footprints available!

# SIGNATURE CALL CENTERS



Designed to optimize floor space, call centers allows for the setup of multiple workstations in a compact area without feeling overcrowded

41"

4' x 2'

SKU : 900



5' x 2'

SKU : 920



53"

4' x 2'

SKU : 910



5' x 2'

SKU : 930



65"

4' x 2'

SKU : 940



5' x 2'

SKU : 970



# POPULAR SIGNATURE CALL CENTER LAYOUTS



← **Footprint:** 5'x3'  
**Height:** 41"  
**Layout:** Cluster of 6  
**Base Color:** Grey  
**Accent Color:** Charcoal  
**Lower Storage:** Box-Box-File

**Footprint:** 4'x2'  
**Height:** 53"  
**Layout:** Run of 3  
**Base Color:** Grey  
**Accent Color:** Blue



← **Footprint:** 5'x3'  
**Layout:** Run of 3  
**Base Color:** Charcoal  
**Accent Color:** Charcoal  
**Lower Storage:** Box-Box-File



**Footprint:** 4'x2'  
**Height:** 53"  
**Layout:** Cluster of 6  
**Base Color:** Grey  
**Accent Color:** Gold Rush





# TEAMWORK STATIONS

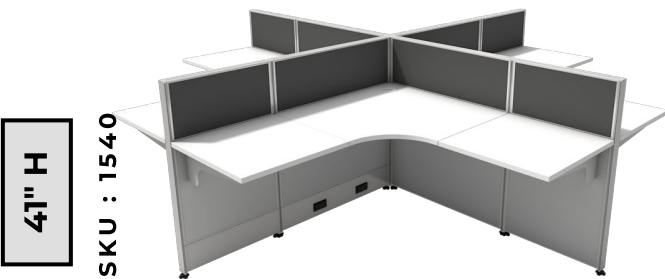


Our Teamwork Stations are designed for teams of 3, 4, 6, or more—with shared panels maximizing efficiency, this setup saves both space and money!

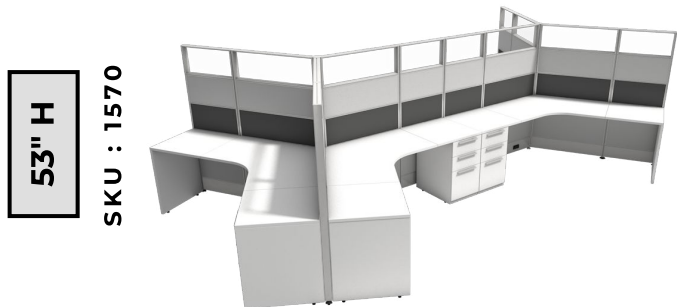
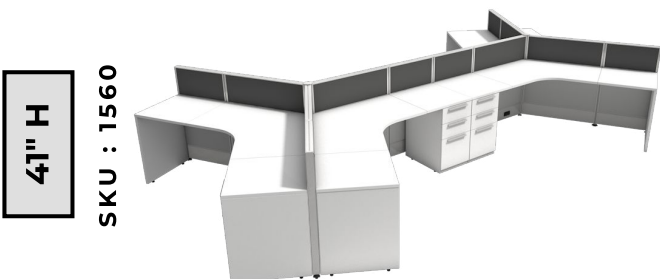
## 3-PERSON STYLE



## 4-PERSON STYLE



## 6-PERSON STYLE



# CUBICLE ACCESSORIES

➔ Cubicle organization accessories help keep your workspace tidy and free from unnecessary clutter.



Sit-Stand Base



Box-Box-File



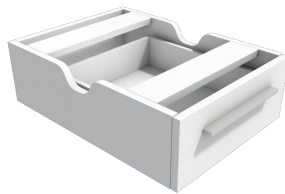
File-File



Mobile Box-File



2-Drawer Lateral File



Hanging Box/Drawer



Double Magnetic Dry Erase Whiteboard



Magnetic Dry Erase Whiteboard



Hanging Shelf



Overhead Task Light



Overhead Storage Cabinet



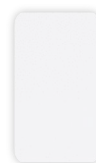
Monitor Arms



Wardrobe Cabinet



Storage Tower



White



Walnut



Grey Fog



Storm Grey

\* most accessories available in the above finishes.

# PRIVACY DOORS



Adding doors to your cubicle significantly enhances the privacy and functionality of your workspace, creating a quieter, more focused environment.

Frosted Sliding Door

SKU : 500



**Sliding Door:** available for any 65"H workstation; door handle can be configured for either left-hand or right-hand use.

Clear Swinging Door

SKU : 505



**Swinging Door:** available for any 82.5"H workstation; door handle can be configured for either left-hand or right-hand use; door includes a lock and key.

# GET IN TOUCH

## CONTACT

313 W 4th Street  
Bridgeport, PA 19405

**PHONE:**  
610.272.2050



## HOURS

24/7 Sales Availability

### SHOWROOM HOURS

Monday - Friday  
8:30 am - 6:00 pm EST

\*Weekends by appointment



Download for easy step-by-step instructions for our Signature T-post installation!

SCAN FOR **BILT** 3D INSTRUCTIONS



POWERED BY **BILT** INTELLIGENT INSTRUCTIONS®

Download for easy step-by-step instructions for our Signature X-post installation!

SCAN FOR **BILT** 3D INSTRUCTIONS



POWERED BY **BILT** INTELLIGENT INSTRUCTIONS®

Download for easy step-by-step instructions for our swinging door installation!

SCAN FOR **BILT** 3D INSTRUCTIONS



POWERED BY **BILT** INTELLIGENT INSTRUCTIONS®



# SUNLINE

*Inspire Growth.*

